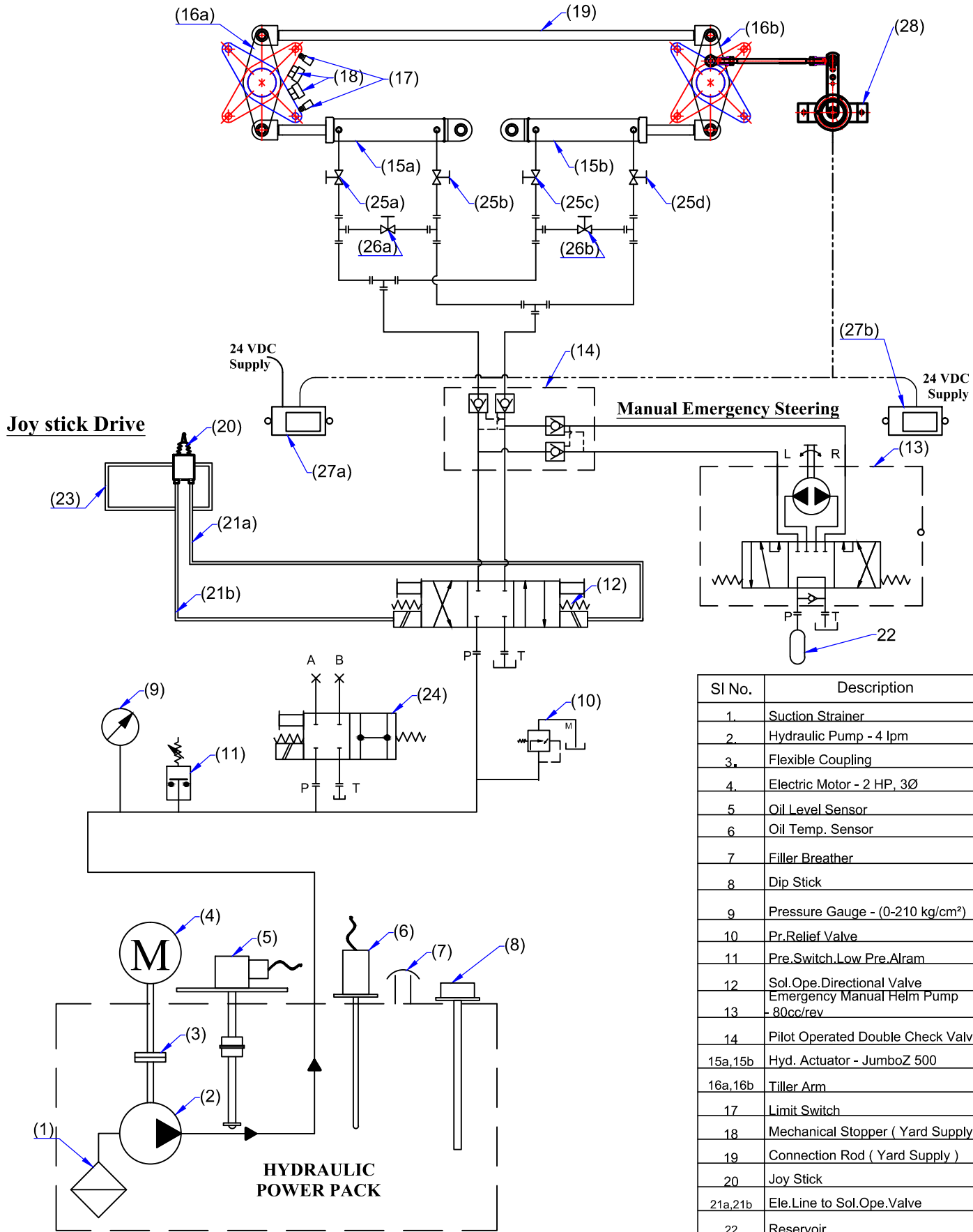


Electro-Hyd. Circuit - JumboZ-500E



Sl No.	Description
1.	Suction Strainer
2.	Hydraulic Pump - 4 lpm
3.	Flexible Coupling
4.	Electric Motor - 2 HP, 3Ø
5.	Oil Level Sensor
6.	Oil Temp. Sensor
7.	Filler Breather
8.	Dip Stick
9.	Pressure Gauge - (0-210 kg/cm ²)
10.	Pr. Relief Valve
11.	Pre. Switch. Low Pre. Alarm
12.	Sol. Ope. Directional Valve Emergency Manual Helm Pump - 80cc/rev
13.	Pilot Operated Double Check Valve
14.	Pilot Operated Double Check Valve
15a,15b	Hyd. Actuator - JumboZ 500
16a,16b	Tiller Arm
17.	Limit Switch
18.	Mechanical Stopper (Yard Supply)
19.	Connection Rod (Yard Supply)
20.	Joy Stick
21a,21b	Ele. Line to Sol. Ope. Valve
22.	Reservoir
23.	Steering Gear Control Panel
24.	Unloading Valve
25a,25b 25c,25d	Isolation Valve
26a,26b	By-Pass Valve
27a,27b	Rudder Angle Indicator
28.	Rudder Angle Sensor



**MAC ♦ N ♦ HOM SYSTEMS
KOCHI - 20**

DESIGNATION

Electro-Hydro. Circuit Twin Rudder
with Emer. Steering - JumboZ-500E

DWG. No.

MHS-JZ-898

DATE

29.04.2021